

World Finals Briefing

Presented by Lilian Wannall & Suzanne Rieter

Best option is to connect through “Computer Audio” if this is an option for you.

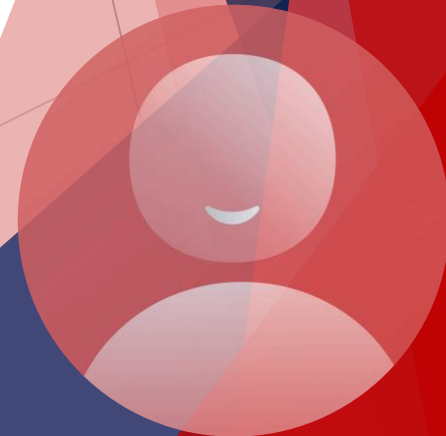
Additional Options to connect audio through phone:

- Once connected to the web conference, select “Call Me” OR
- Dial-in number (US): (267) 807-9605 Access code: 326805
- Text 'Call Me' to (267) 807-9605 to receive a call back; then enter 326805 to join the meeting.



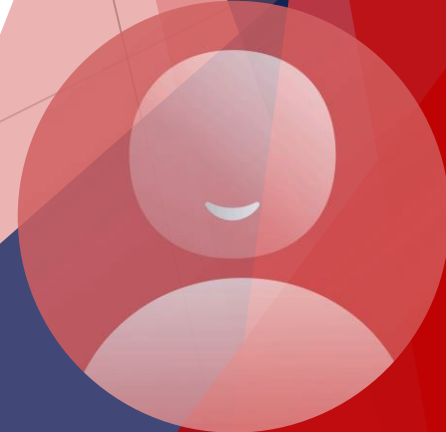
Overview

- ▶ What is WF?
- ▶ Dates
- ▶ Decisions
- ▶ Travel
- ▶ Accommodations
- ▶ Dining
- ▶ Payments
- ▶ Team Schedule
- ▶ The WF Experience
- ▶ Pin Trading
- ▶ Pins & Shirt sales
- ▶ Other Activities
- ▶ Security
- ▶ Other Questions?



What is World Finals (“WF”)

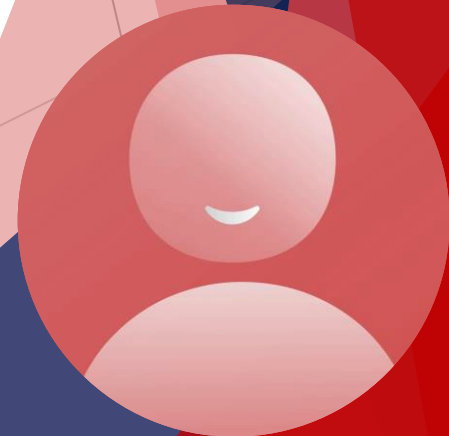
- ▶ WF is a competition with the top teams from every National and International Association. The best of the best!
- ▶ It includes about 800 teams, compared to the 100 teams we had at our State tournament. This is to give you a measure of the event size.
- ▶ WF 2024 is hosted at Iowa State University (ISU), in Ames, IA.
- ▶ Odyssey of the Mind WF take over a large portion of the campus including dorm housing.



Events Dates

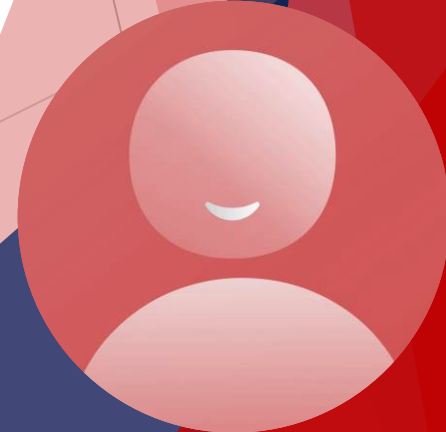
Events are from May 21st to May 24th, 2024 (the week before Memorial Day). The typical team plan is:

- ▶ Tuesday 21st - Arrival in Iowa
- ▶ Tuesday evening - Opening Ceremonies
- ▶ Wednesday - Competition Day
- ▶ Thursday - Competition Day
- ▶ Friday - Competition Day
- ▶ Friday evening - Awards & Closing Ceremonies
- ▶ Saturday - Travel home



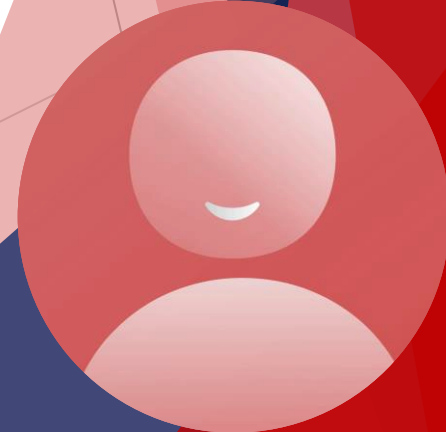
Decisions To Be Made

- ▶ Will the team participate in World Finals - **due April 6th**
- ▶ Will the team (and families) stay on-campus or off-campus - **also due April 6th** but we recommend registering sooner, even if details are not finalized. One major consideration this year is the George Strait concert at ISU on Saturday May 25th (the day after WF ends). Hotel availability and cost will be impacted.
- ▶ Make travel arrangements soon. Good task to delegate to a parent.
- ▶ Make arrangements soon for transportation/shipping of your sets, props, etc. Some regions arrange a shared co-op. Typically a One-way shared moving truck with 1-2 volunteer drivers, or a professional driver (more expensive).



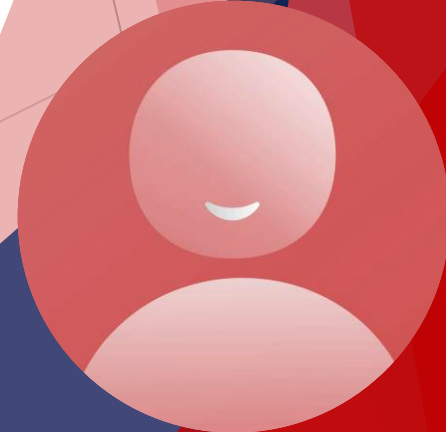
Travel Options

- ▶ Flights to Des Moines Airport, IA (DSM). There is a reliable shuttle service from airport to campus - 45 minutes. \$75 per person round trip. You **MUST** reserve by May 3rd.
- ▶ Flights to regional airports are not recommended but you can fly to a nearby larger airport and rent cars/vans if the option is available and cheaper. Cedar Rapids, IA (90 minutes drive), Omaha, NB (3.5 hrs).
- ▶ Drive to ISU with private vehicles.
- ▶ Ride a shared charter bus, typically organized by schools, some PTOs or private individuals.
- ▶ RVs are not allowed on campus, but you can park in a camp and commute in with a different vehicle.



Accommodations

- ▶ The Odyssey rooming package is mostly in campus dorms. Most rooms are double occupancy and often bunk beds, but they are the best option to be on-site. Rooming assignments are made in the order they are received but consideration is made to the size of parties. Once they are full, teams are then given off-site accommodations - do NOT delay reserving your housing.
- ▶ The basic package is Tue to Sat but there are other options if teams want to arrive one day earlier.
- ▶ The typical Hybrid Model (subject to confirmation for 2024): some stay on-site and some off-site. As long as you purchase x packages ($x = \text{team member count} + 1$), your registration fee is included, and you do not pay an additional site fee. It does not matter *who* sleeps on-site, members, coach, family, etc.



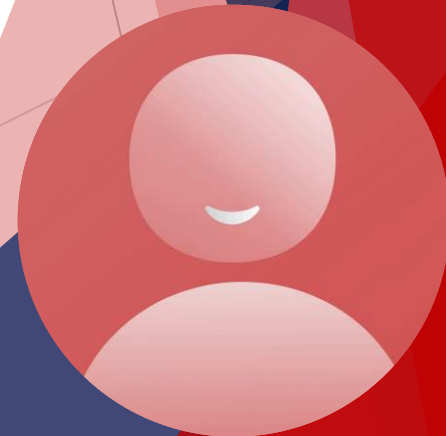
Accommodations (Cont'd)

- ▶ An entire team can choose to stay off-campus, but they must pay a site fee to cover their share of the campus expenses, campus shuttles, access to all campus recreational facilities, events and ceremonies. The fee is \$3,750/team if registered **before April 23rd** , after that date the fee is \$4,250/team.
- ▶ If you are off-site, you need to allow time to travel in, park in designated parking locations and take internal campus shuttle.
- ▶ Individuals are not permitted to stay in RVs and Campers on campus. But there is a KOA 14 min from campus if that you can park the RV there and drive into campus.



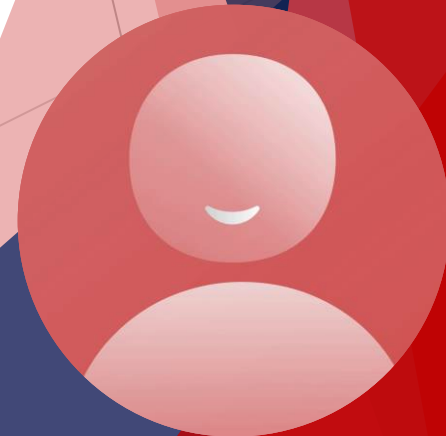
Dining

- ▶ Once you check-in into your campus housing, you will be assigned a dining Hall for your meals.
- ▶ Some Dining Halls offer the option to take a packed lunch, so that you don't have to travel back to your assigned dining hall in the middle of the day.
- ▶ Guests who have selected to stay off-campus can buy on-site Dining packages as well.



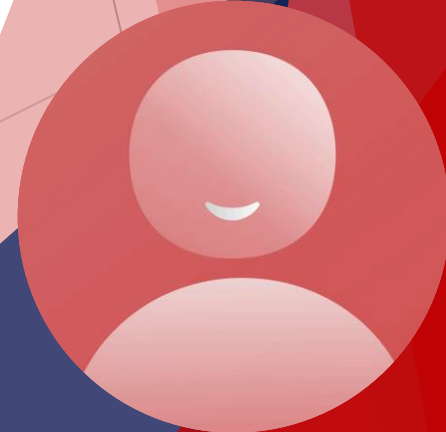
Payments

- ▶ All payments for registration, on-site packages or site fees are due **by April 23rd, 2024.**
- ▶ At the registration deadline, an invoice is added to your registration and coaches get a link to share with parents who can each pay their share by credit card.
- ▶ Teams typically engage in fundraising to help defray the costs. Some fundraising continues into the summer. We have a webpage with fundraising ideas.



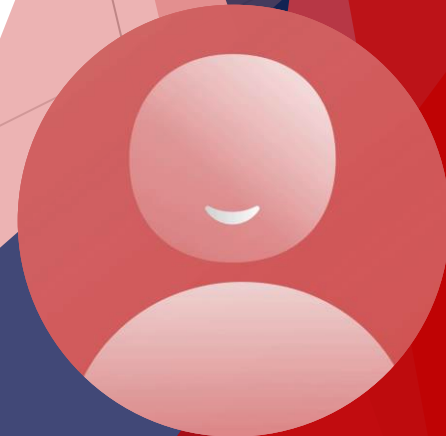
Team Schedule

- ▶ Teams will typically have Long term on one day and Spontaneous on a different day.
- ▶ The *tentative competition schedule* will be available for preview from April 30th to May 2nd .
- ▶ The *final competition schedule* will be posted on May 7th .
- ▶ If you have special requests, you **MUST MAKE THEM AT TIME OF REGISTRATION**: i.e. Team member on multiple teams, coaching multiple teams. Team member OR coach arriving later than Tuesday or departing earlier than Friday 5 pm. Not all requests can be honored but you have a better chance if you request **BEFORE** the scheduling process starts.



The World Finals Experience

- ▶ Whether you plan to stay on-site or off-site, your team is encouraged to enjoy the full WF experience.
- ▶ It is a unique experience that is hard to describe. If you are staying off-campus, we recommend that you do not plan to show up for two hours and leave.
- ▶ Teams have a lot of activities on-site. Watching other teams, Creativity Festival, International Festival events sponsored by Arm & Hammer and NASA, the Float & Banner Parade, the Coaches Competition, and more...
- ▶ Pin trading is HUGE at World Finals. Pin trading is a great way to meet new friends from all over the world and to create a collection to help you remember your World Finals experience the rest of your life.



Pin Trading at WF



▶ Yes, Pin Trading is a BIG deal at WF. Everywhere you look, students and adults alike drop their pin towel and review each-other's pins to make another exciting trade. Something exotic, different, cultural or trendy!

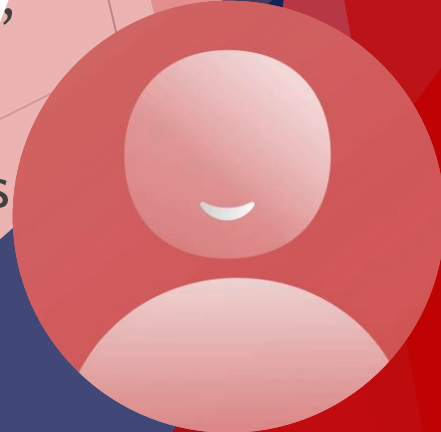
▶ It became so popular in the last decade that OdysseyHQ had to designate specific Pin Trading areas as they were over-running the competition venues.

▶ How many pins? Never enough! A good start is about 30-40 pins because you want to keep some and bring back many from this unique experience.



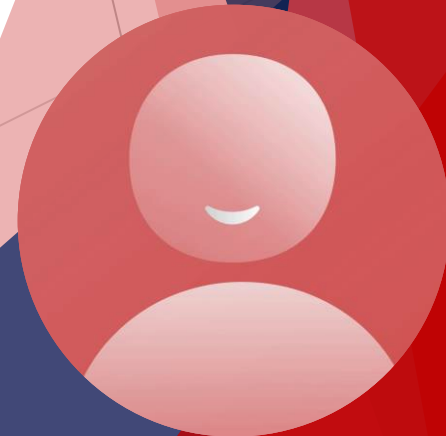
Pin and Shirt Sales at TXOM Store

- ▶ TXOM Store will be open in April for three weeks.
 - Purchase online with credit card only.
 - Shipped to North, Central & South TX teams early May.
 - Pick-up from a designated location for all HARO teams.
 - All teams pay a handling fee, whether shipped or not.
- ▶ Details of TX sales will be posted soon on our WF website.
- ▶ Consider buying enough face/arm decals to wear every day at WF.
- ▶ Dress code for teams: Tue: Region shirt (tie-dye with Lightning Bug), Wed: State shirt (blue with Viking Cow), Thu: free dress, Fri Awards Ceremony: TXOM WF ceremony shirt distributed to advancing teams at State: (grey with Prime Creativity).



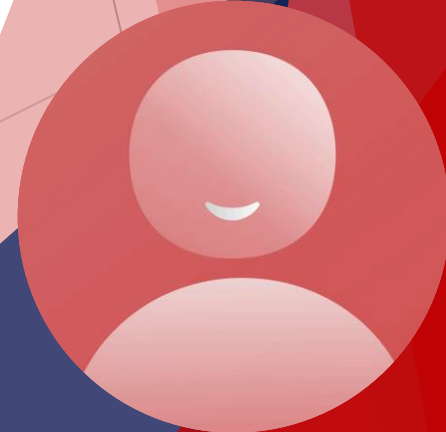
Other Activities

- ▶ NASA and Arm & Hammer will have extensive presentations with interactive activities.
- ▶ Creativity Festival where Associations organize fun activities for teams.
- ▶ International Festival is a must as part of the experience.
- ▶ If you, as a coach or parent, have envied your team for the fun of solving a creativity problem; if you have struggled keeping all your creative ideas to yourself all year long - here is your chance: There is a **Coaches' Competition** on Thursday evening, parents and teams can participate as well.



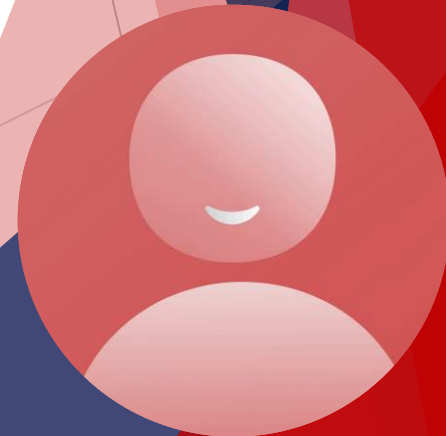
Other Activities (Cont'd)

- ▶ High School and College students missing their graduations that week are invited to participate in the **WF graduation ceremony** on Thursday.
- ▶ **Campus recreation** available to all teams and families, whether you are staying on campus or not. Swimming pool, games, bowling, rock climbing (cost of rock climbing not included), etc.
- ▶ Visit the **campus Creamery** for great ice cream! Visit **Reimans gardens**.
- ▶ Explore **Ames** and have a meal in town (restaurant reservations recommended).



Security

- ▶ If you have concerns about security, please read the security policy on ISU website.
- ▶ OM teams will be spread across campus.
- ▶ The only events with larger participation are the Opening and Closing Ceremonies. They will both be ticketed events (free tickets), with enhanced security. Only clear bags of a certain size will be allowed.



More questions?

- ▶ Any topics not covered above?
- ▶ This is not your last chance, feel free to email our World Finals Committee whose mission is to facilitate our Texas teams.
- ▶ We will start periodic newsletter to keep you posted on current topics for the next two months.

wf@txodyssey.org

